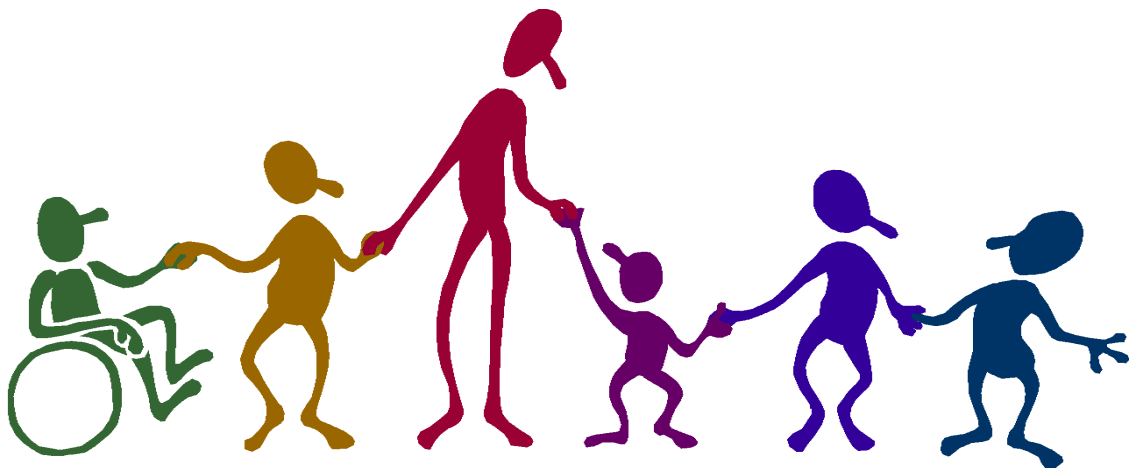




Accessibility Plan



Introduction and Background

Welcome to our Accessibility Plan. Our school mission statement is ...

WE ARE LEARNING TO BEE THE BEST THAT WE CAN BEE BY ...

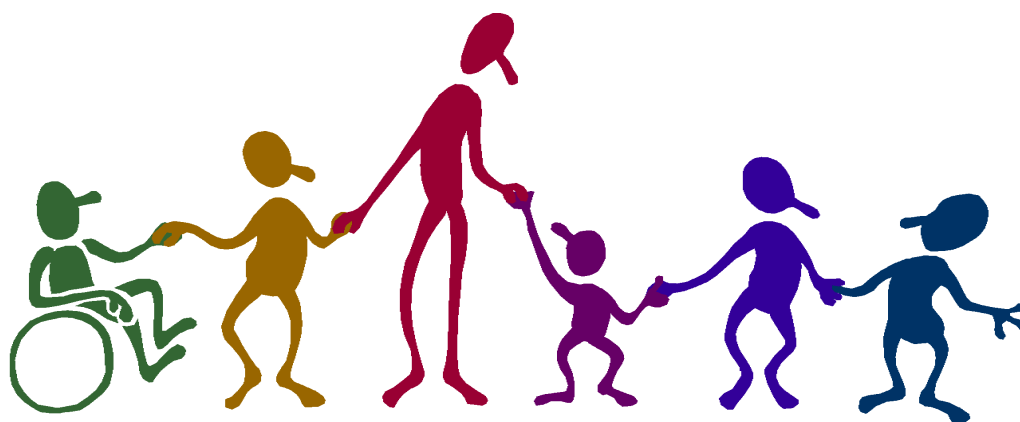
EDUCATING ALL CHILDREN IN A CARING, HAPPY, STIMULATING AND SECURE ENVIRONMENT SO THAT THEY DEVELOP THEIR FULL POTENTIAL TO OUR COMMITMENT TO HIGH ACHIEVEMENTS.

We believe that all children are individuals and as a school it is essential that we cater for every child's individual needs. In striving to maximise every child's potential we are committed to ensuring equal opportunities so that no groups are disadvantaged through inequality.

In conclusion EVERY CHILD SHOULD HAVE EQUAL EDUCATIONAL OPPORTUNITIES!

In this document we aim to set out how Aidingbourne Primary School will improve its accessibility for pupils with disabilities in the following two areas:

1. Increasing participation of pupils with disabilities in the SCHOOL CURRICULUM
2. Improving the PHYSICAL ENVIRONMENT of our school



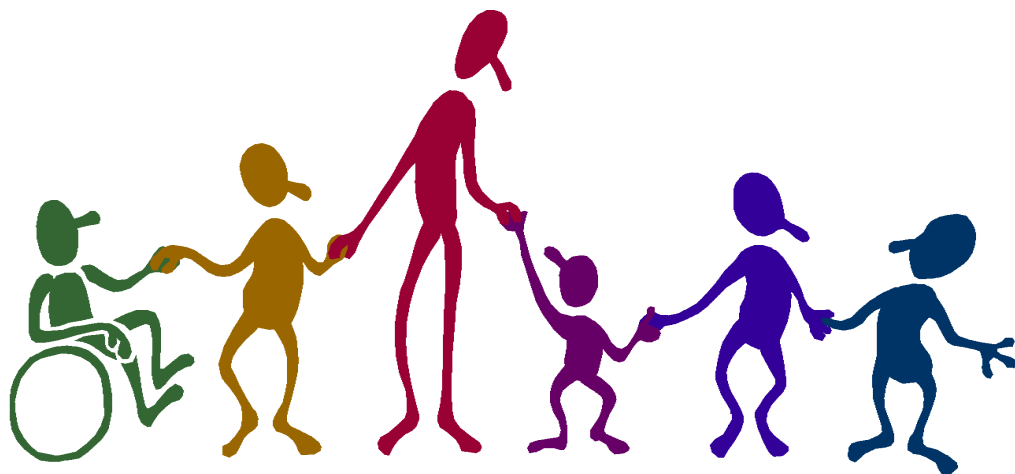
WHERE ARE WE NOW?

1. ACCESS TO THE CURRICULUM

- ❖ Lessons to provide opportunities for all children to achieve
- ❖ Lessons are responsive to pupil diversity
- ❖ Lessons involve work to be done by individuals, pairs, groups and whole class
- ❖ Pupils are encouraged to take part in a wide range of music, drama and physical activities
- ❖ Access to ICT appropriate for pupils with disabilities
- ❖ High expectations of all pupils
- ❖ Staff seek to remove all barriers to learning and participation

2. ACCESS TO THE PHYSICAL ENVIRONMENT

- ❖ Entry and exit areas to the school are accessible to all pupils including those in wheelchairs
- ❖ Doorways providing movement around the main school allow access to all pupils including those in wheelchairs
- ❖ Playgrounds and outdoor sporting facilities provide access to all pupils including those in wheelchairs
- ❖ Pathways of travel around the school site are safe and easy to negotiate
- ❖ Disabled toilet in the front area of the school
- ❖ Reduced level hatch at school reception caters for those in wheelchairs



WHAT CAN WE DO TO IMPROVE?

| ACCESS TO THE CURRICULUM | Action to be taken by ... |
|--|---------------------------|
| ➤ Invite local representatives from the disability service to talk to staff and children | Headteacher |
| ➤ Introduce concept of 'dealing with disability' into the school PSHCE curriculum | Headteacher & Staff |
| ➤ Train staff in 'dealing with disability' all aspects PHYSICAL, SENSORY, LEARNING | Headteacher & Staff |
| ➤ Review Intimate Care policy and ensure that all staff adhere to the policy | Headteacher & Staff |
| ➤ Explore training options for Use of force to control or restrain pupils | Headteacher |

| ACCESS TO THE PHYSICAL ENVIRONMENT | Action to be taken by ... |
|--|---------------------------------|
| ➤ Install an electric door to the main entrance – Funding Issue | Headteacher, Premises Committee |
| ➤ Remove steps to the field and install a ramp. This will allow full accessibility to the school field | Headteacher, Premises Committee |

